

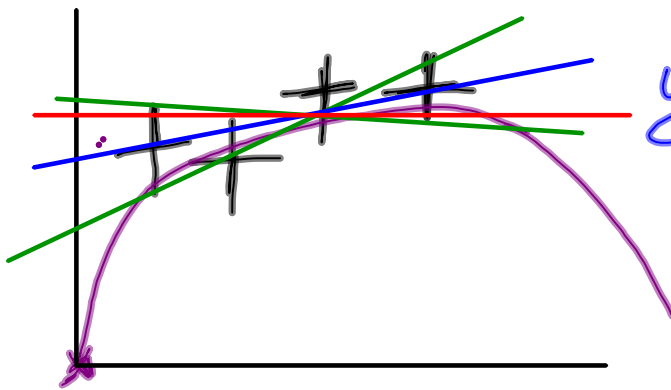
Calculating Average Uncertainty:

Independent Variable	Period Trials			Average	Uncertainty of Average
	Max	Min	Other data		
	Min	Other data	Max		

$$\frac{*Max - Min}{2}$$

If the uncertainty of the average is less than +/- 0.2 then just use +/- 0.2

Graphs:



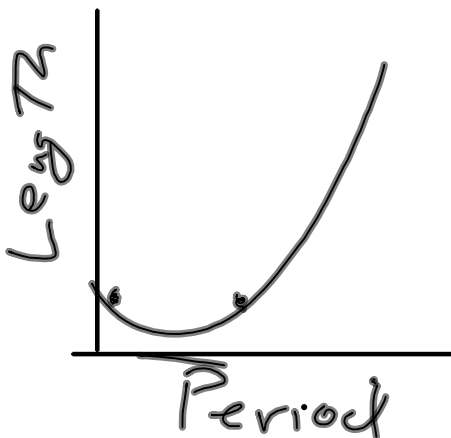
$$y = mx + b$$

that has 2 parameters. We don't like that

~~(0, 1.5)~~
(0.00001, 1.5)

Zero Slope has only one parameter, if you can use it, do

it won't hit zero but it will get real close to it



$$y = \underline{A}x^2 + \underline{B}x + \underline{C}$$

$$B = 0$$

$$C = 0$$